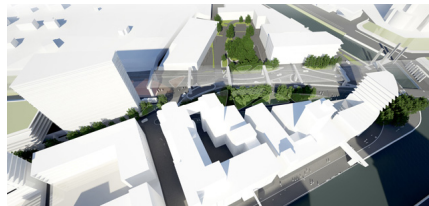
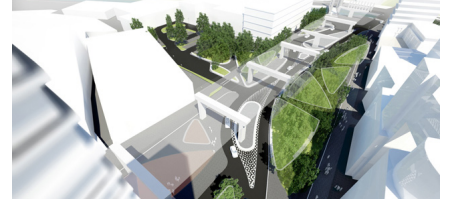
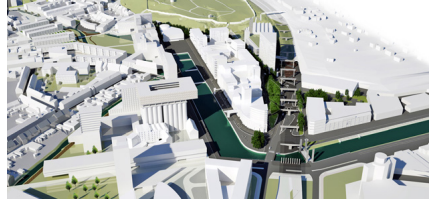


VAARTKOM & ENGELSPLEIN

2010, Leuven, Belgium



The area of the Vaartkom is characterized by a fascinating variety of features and scale. The original port operations are almost completely gone, what remains are the remnants of a rich industrial past. An attractive district will emerge where living, working and production function in a healthy balance.

This shift to a more human use also requires an adjustment to the design of public space. The accessibility of many homes and commercial spaces should be ensured, so the area will be better connected to the surrounding technical structures. The public space around the Vaartkom transforms from an industrial to an esplanade wharf, a lounge with numerous terraces. The hardness of a port makes room for warmth, for green, for a human habitat.

The Engelsplein is an important part in this transformation. The square plays a qualitative role as transit space. The presence of the viaduct, the busplatforms and the entrance ways to the public parking define the public space. A maximum green character is created by gathering the necessary 'hard' surfaces under the viaduct. It is people and green who get all daylight.

client

City of Leuven

partners

West 8 together with Snoeck en Partners, Bas Dirk Jaspaert, ERM, Tritel

team

Adriaan Geuze, Maarten van de Voorde, Eduard Balcells, Pieter Hoen, Ramona Stiehl, Andrew Tang, Ronald van Nugteren