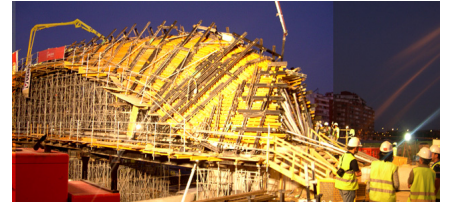


## MADRID'S SHELL BRIDGE GETS ITS CONCRETE DOME

01-09-2009



Construction is moving along at the first Shell Bridge, West 8+ MRIO designed for the City of Madrid. 100 m<sup>3</sup> of concrete was poured inbetween the two layers of the wooden mold, moving another step closer to the desired end result: a concrete dome.

more information: [Cascara Bridges](#)